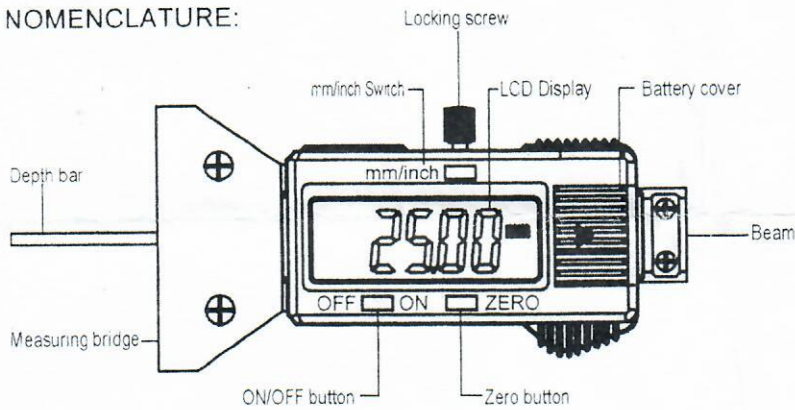


DIGITAL TREAD DEPTH GAUGE OPERATING INSTRUCTIONS

NOMENCLATURE:

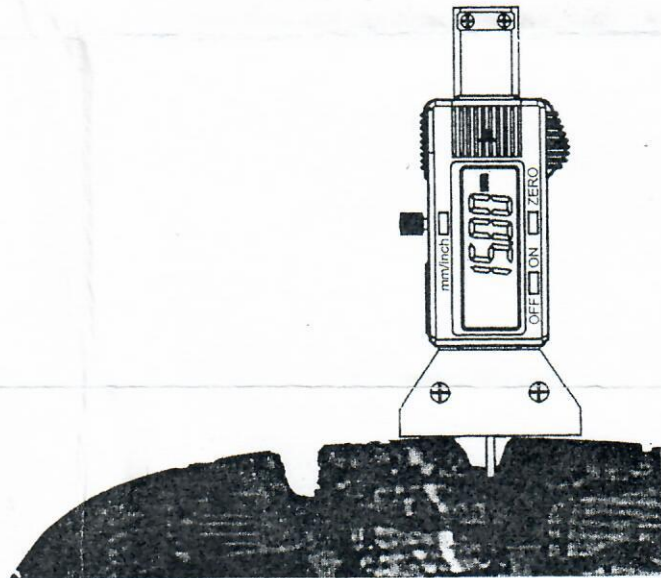
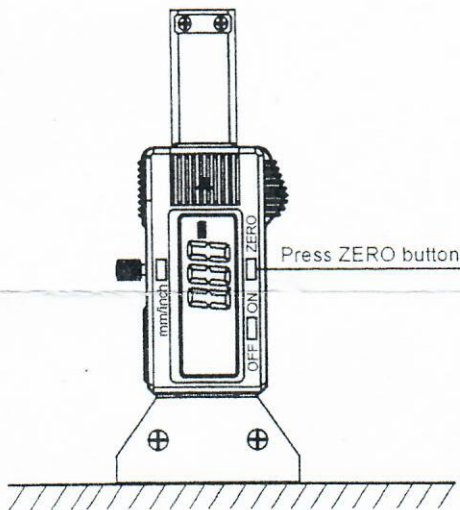


SPECIFICATIONS

- Range: 0~25.4mm/1"
- Resolution: 0.01mm/0.0005"
- Accuracy: $\pm 0.03\text{mm}$
- Working Temp.: 0 °C ~ +40°C
- Storage Temp.: -20 °C ~ +70°C
- Influence of humidity: $\leq 80\%$

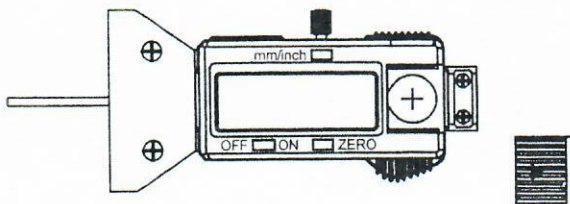
INSTRUCTIONS:

1. Before using the Digital Tread Depth Gauge, loosen the locking screw. Press the "ON/OFF" button to power on.
2. Select the unit system needed by pressing "mm/inch" button.
3. Lay measuring bridge on a flat surface, then push the beam down to make the depth bar contact with the flat surface.
4. Press ZERO button(3).
5. Then it can work.



BATTERY REPLACEMENT

Flashing of digits shows a flat battery. Take off the battery cap in the direction shown by the arrow and replace the battery (positive side facing out)



MAINTENANCE INSTRUCTIONS

1. Do not cleanse the display module with organic solutions.
2. Keep this Digital Tread Depth Gauge away from dust, high temperature and radiation.
3. Keep this Digital Tread Depth Gauge away from liquid such as water and coolant.
4. Never apply any electric pressure on any part of the Digital Tread Depth Gauge.
5. Avoid bumping or dropping during measurement.
6. If the Digital Tread Depth Gauge won't be used in more than 3 months, take out the battery.
7. Beware the sharp jaws when using the caliper. Keep it in the place where children can not reach.

TROUBLE SHOOTING

1. **Digits twinkle or no digits are displayed:**
Voltage is too low, replace with a new battery.
2. **Digits displayed are not orderly:**
The dirty surface of the caliper beam usually causes this problem. Clean the caliper beam with soft cloth.